



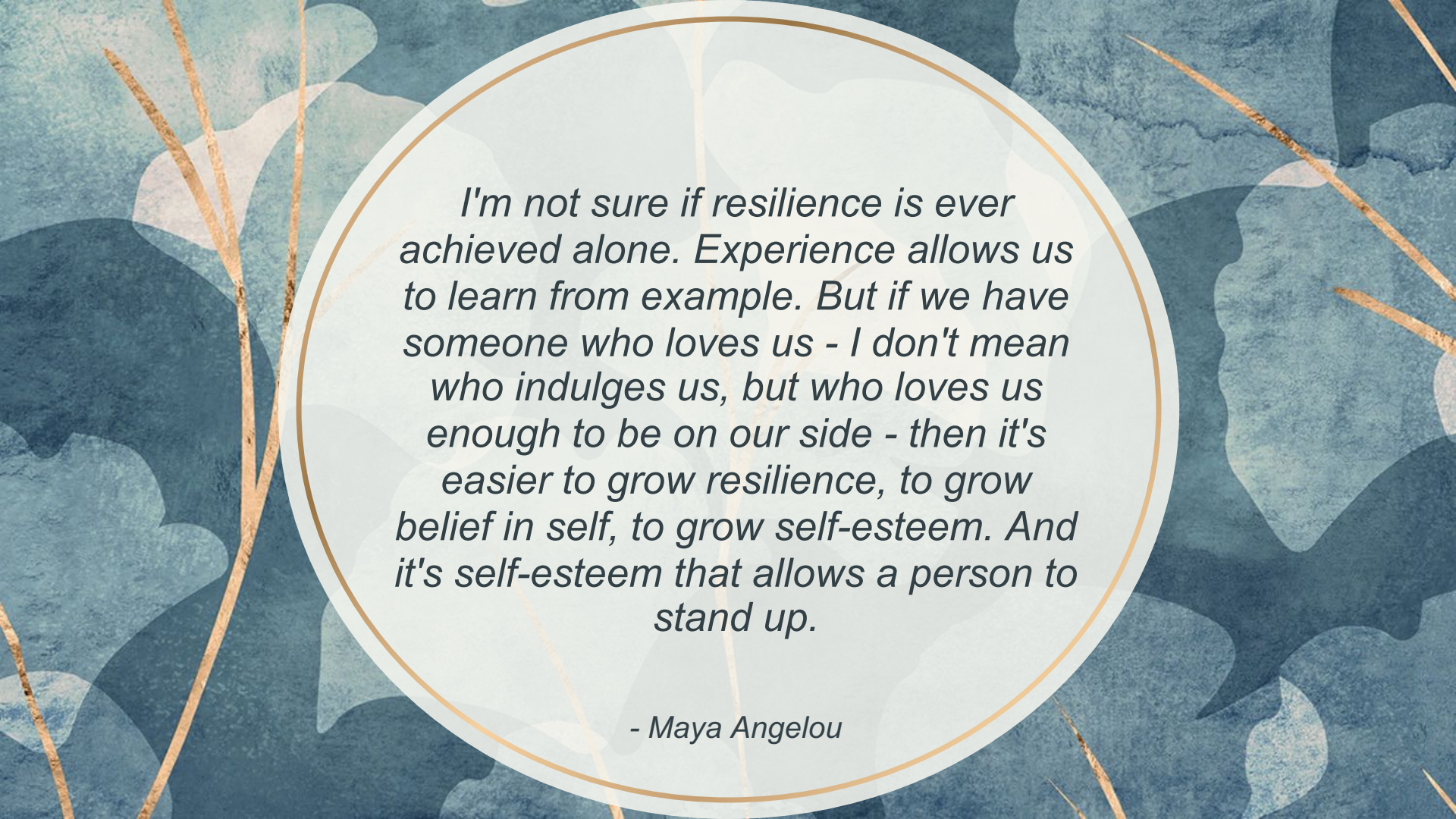
# Discovering Strength

Application of Resiliency to Mitigate the Impact of  
Adverse Childhood Experience in Adolescents

# Introduction

Dr. Melody M. Avila, DNP, RN, FNP-C  
No disclosures

Dr. Tamara J. Shannon DNP, RN, CPNP-PC  
No disclosures

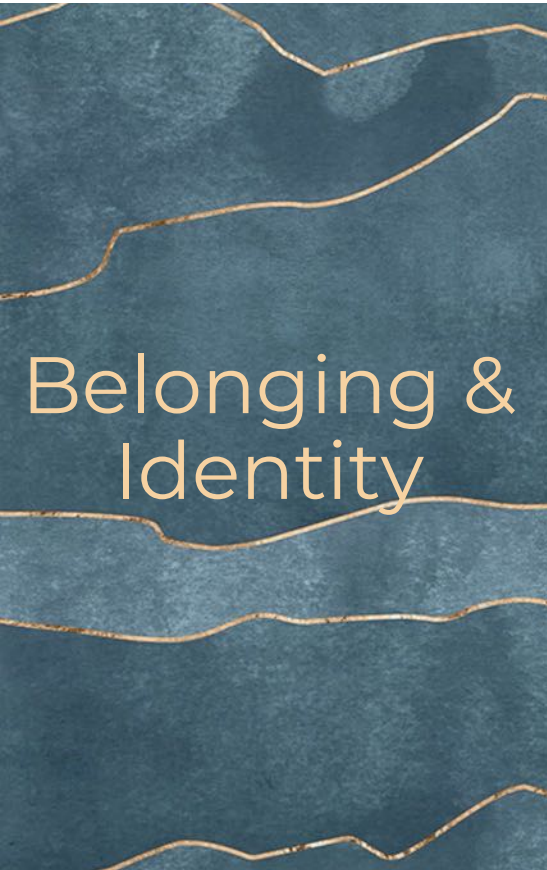
The image features a quote by Maya Angelou centered within a white circular frame. The background is a textured, abstract pattern in shades of blue and teal, accented with thin, golden-brown lines that resemble dried grass or reeds. The text is written in a black, italicized serif font.

*I'm not sure if resilience is ever achieved alone. Experience allows us to learn from example. But if we have someone who loves us - I don't mean who indulges us, but who loves us enough to be on our side - then it's easier to grow resilience, to grow belief in self, to grow self-esteem. And it's self-esteem that allows a person to stand up.*

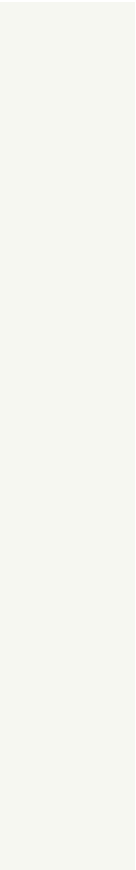
*- Maya Angelou*

# Adolescence





- Social Cognition
- Acceptance
- Curiosity
- Belonging
- Attachment



# Resilience





- Abuse
  - Physical, Emotional, Sexually
- Neglect
  - Physical, Emotional
- Household Dysfunction
  - Untreated mental illness
  - Mother treated violently
  - Divorce
  - Incarceration
  - Untreated substance abuse

(Robles et al. 2019)



- Multiple definitions
- Missing pieces
  - Racism
  - Bullying
  - Discrimination
  - Forms of discipline

(Robles et al. 2019)





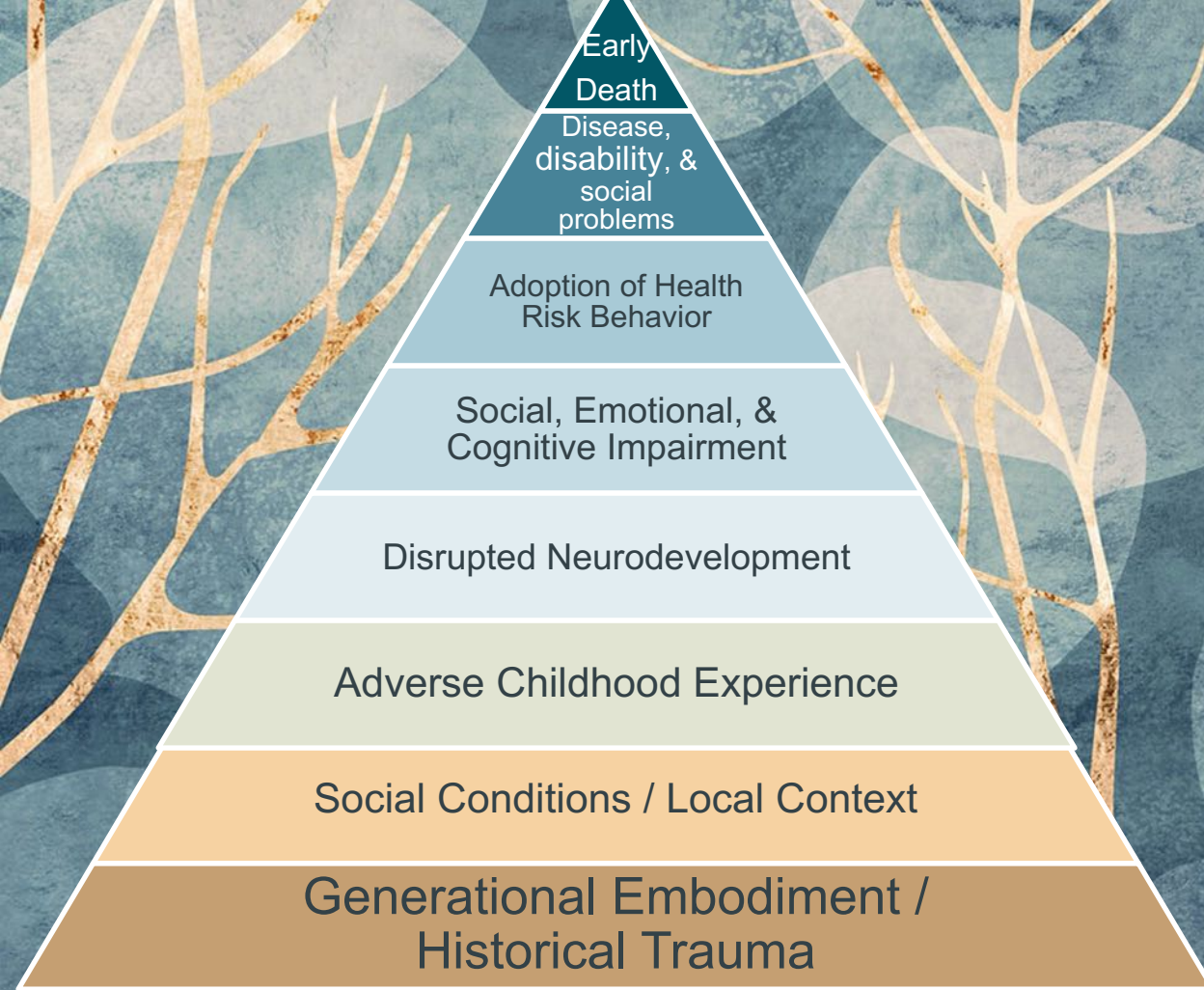
(Ellis & Dietz, 2017)

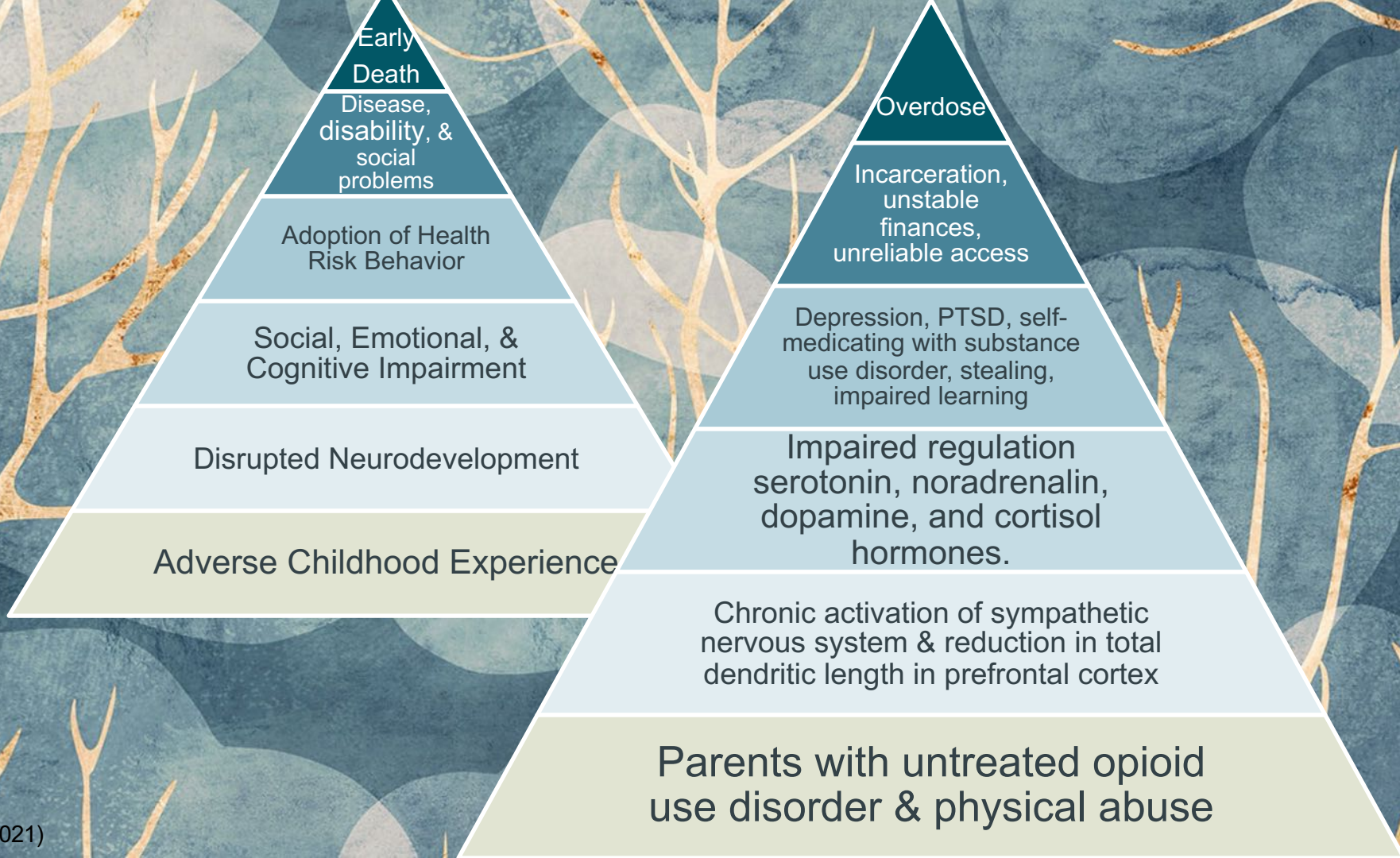
# Impact of ACEs



(Russell, 2020)







# Generational Impact

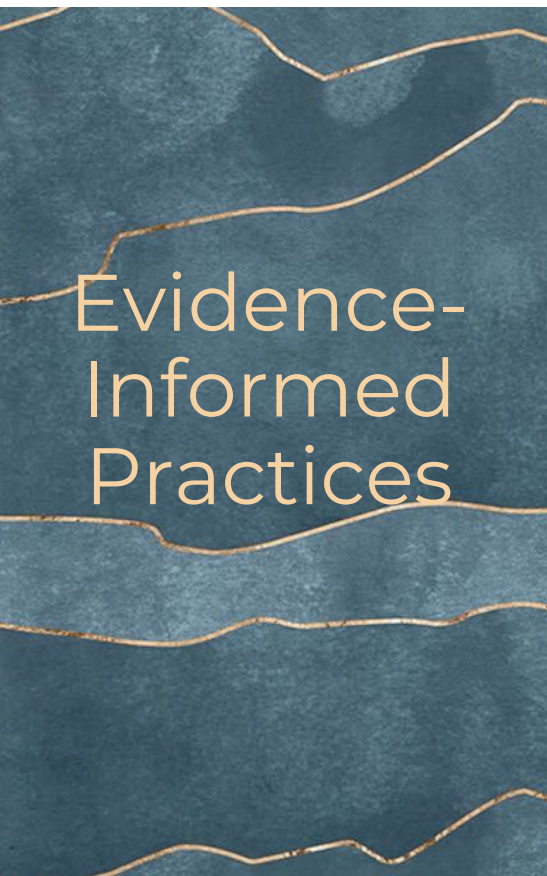


(Haomiao & Lubekin, 2020; Fekadu et al., 2019)

# New Mexico Juvenile Justice System



(Graf et al, 2021; Cannon et al, 2019)



## Evidence-Informed Practices

- Developing resilience
- School / community engagement
- Primary medical care and mental health for families
- Community navigators
- Telehealth services
- Harm reduction approach



# Spanking

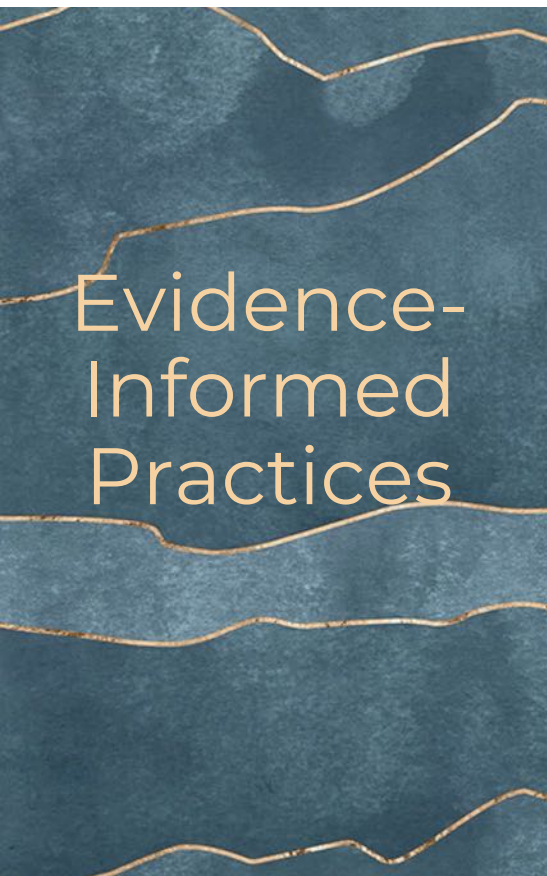




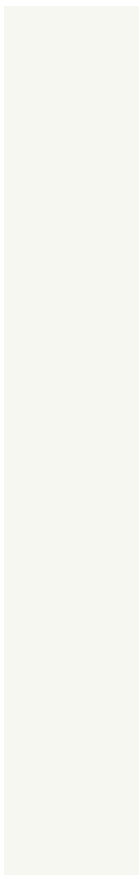
# Attachment

- Parental attachment
- Belonging
- Community
- Acceptance





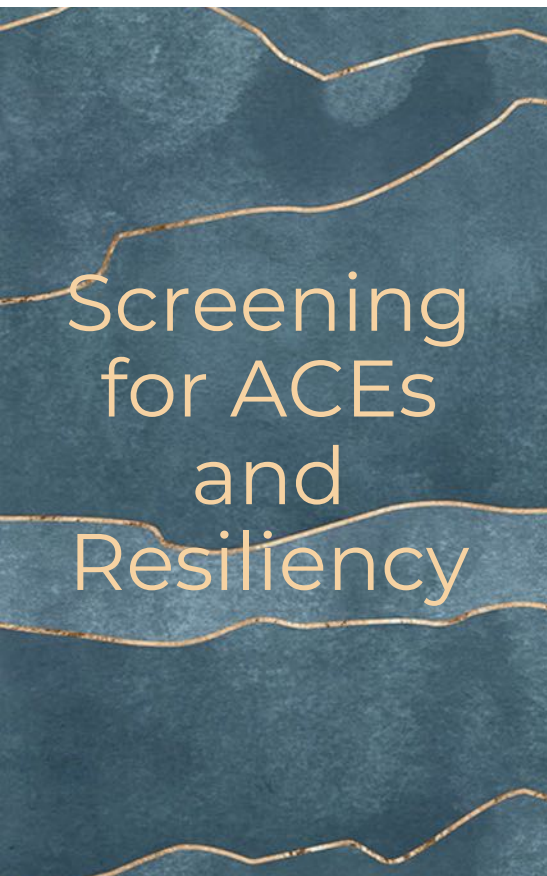
# Evidence- Informed Practices

- Developing resilience
  - School / community engagement
  - Whole - family approach
  - Community navigators
  - Telehealth services
  - Harm reduction approach
- 



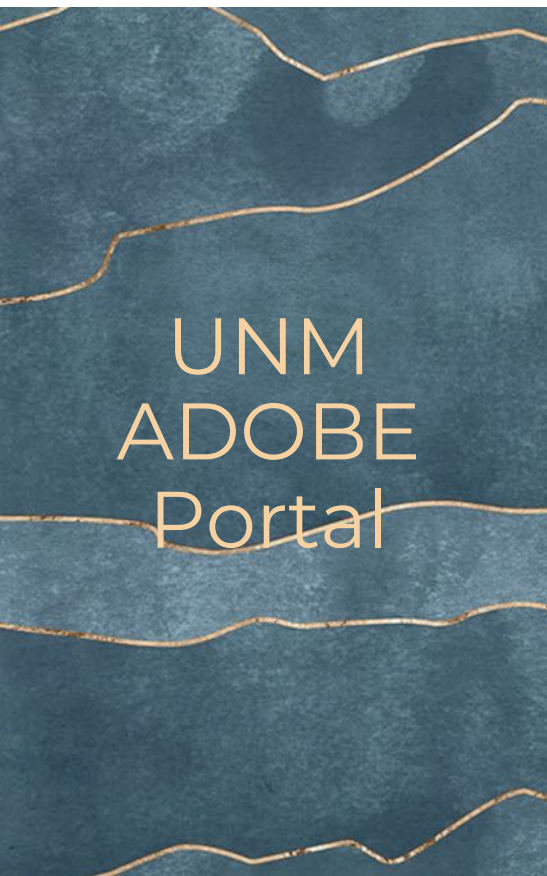
- Reproductive health
- Inclusive LGBTQ health
- Mental health
- Substance use disorders





## Screening for ACEs and Resiliency

- Evaluating how practices use ACE screening tools
  - Controversies
  - When is it appropriate?
- Integrated screening instruments
  - Development
  - Child behavior
  - Social determinants

The graphic features a dark blue, textured background with several horizontal, wavy lines in a golden-brown color. The text 'UNM ADOBE Portal' is centered in a light beige, sans-serif font.

# UNM ADOBE Portal

- Home/ Community Based Navigators
- Educational Navigators
- Primary Medical Care
- Psychiatric /Mental Health Care
- Legal referrals to the UNM Law Clinic
- Behavioral health services

- Barnett ML, Gonzalez A, Miranda J, Chavira J, Lau AS. Mobilizing Community Health Workers to Address Mental Health Disparities for Underserved Populations: A Systematic Review. 2018. Accessed December 9, 2020. [https://search-ebscohost-com.libproxy.unm.edu/login.aspx?direct=true&db=edssch&AN=edssch.oai%3aescholarship.org%2fark%3a%2f13030%2ftq6nw3w5zf&site=eds-live&scope=site](https://search.ebscohost.com.libproxy.unm.edu/login.aspx?direct=true&db=edssch&AN=edssch.oai%3aescholarship.org%2fark%3a%2f13030%2ftq6nw3w5zf&site=eds-live&scope=site)
- Berger-Jenkins, E., Monk, C., D'Onfro, K., Sultana, M., Brandt, L., Ankam, J., Vazquez, N., & Meyer, D. (2019). Screening for both child behavior and social determinants of health in pediatric primary care. *Journal of Developmental and Behavioral Pediatrics : Jdbp*, 40(6), 415–424. <https://doi-org.libproxy.unm.edu/10.1097/DBP.0000000000000676>
- Bryant, C., & VanGraafeiland, B. (2020). Screening for adverse childhood experiences in primary care: a quality improvement project.
- Butler AM, Rodgers CRR. Developing a Policy Brief on Child Mental Health Disparities to Promote Strategies for Advancing Equity among Racial/Ethnic Minority Youth. *Ethn Dis*. 2019;29(Suppl 2):421-426. Published 2019 Jun 13. doi:10.18865/ed.29.S2.421
- Cannon Y, Davis G, Hsi A, Bochte A. Adverse Childhood Experiences in the New Mexico Juvenile Justice Population. New Mexico Sentencing Commission. 2019.
- Centers for Disease Control and Prevention. (202) Adverse Childhood Experiences Prevention Strategy. National Center for Injury Prevention and Control, Centers for Disease Control and Prevention.
- Choi, K. R., Stewart, T., Fein, E., McCreary, M., Kenan, K. N., Davies, J. D., Naureckas, S., & Zima, B. T. (2020). The impact of attachment-disrupting adverse childhood experiences on child behavioral health. *The Journal of Pediatrics*, 221, 224–229. <https://doi-org.libproxy.unm.edu/10.1016/j.jpeds.2020.03.006>
- Ellis WR, Dietz WH. A New Framework for Addressing Adverse Childhood and Community Experiences: The Building Community Resilience Model. *Academic Pediatrics*. 2017;17:S86-S93. doi:10.1016/j.acap.2016.12.011
- Fekadu W, Mihiretu A, Craig TKJ, Fekadu A. Multidimensional impact of severe mental illness on family members: systematic review. *BMJ open*. 2019;9(12):e032391. doi:10.1136/bmjopen-2019-032391



- Garrido, M., et al. (2018). Where Youth Live, Learn, and Play Matters: Tackling the Social Determinants of Health in Adolescent Sexual and Reproductive Health. *American Journal of Sexuality Education*, 13(3): 269-282. <https://doi-org.libproxy.unm.edu/10.1080/15546128.2018.1458264>
- Godoy L, Hodgkinson S, Robertson HA, et al. Increasing mental health engagement from primary care: The potential role of family navigation. *Pediatrics*. 2019;143(4). doi:10.1542/peds.2018-241
- Graf, G.H., Chihuri, S., Blow, M., Guohua, L. (2021). Justice system contact: A systematic review. *Pediatrics*, 147(1). doi:10.1542
- Haomiao, J., and Lubekin, E. (2020). Impact of adverse childhood experiences on quality-adjusted life expectancy in the U.S. population. *Child Abuse & Neglect*. 102. <https://www-sciencedirect-com.libproxy.unm.edu/science/article/pii/S0145213420300739?>
- Hill, P. L., Edmonds, G. W., Peterson, M., Luyckx, K., & Andrews, J. A. (2016). Purpose in life in emerging adulthood: Development and validation of a new brief measure. *Journal Of Positive Psychology*, 11(3), 237-245. doi:10.1080/17439760.2015.1048817
- Horner, G. (2020) Attachment disorders. *Journal of Pediatric Health Care*, 33(5), 612–622. <https://doi-org.libproxy.unm.edu/10.1016/j.pedhc.2019.09.005>
- Jichlinski, A. (2017). Defang aces: End toxic stress by developing resilience through physician-community partnerships. *Pediatrics*, 140(6). doi: 10. 1542
- Kassis, W., Artz, S., & White, J. (2017). Understanding Depression in Adolescents: A Dynamic Psychosocial Web of Risk and Protective Factors. *Child & Youth Care Forum*, 46(5), 721-743. doi:10.1007/s10566-017-9404-3
- Kia-Keating, M., Barnett, M. L., Liu, S. R., Sims, G. M., & Ruth, A. B. (2019). Trauma-responsive care in a pediatric setting: feasibility and acceptability of screening for adverse childhood experiences. *American Journal of Community Psychology*, 64(3-4), 286–297. <https://doi-org.libproxy.unm.edu/10.1002/ajcp.12366>
- Lawes-Wickwar S, McBain H, Mulligan K. Application and Effectiveness of Telehealth to Support Severe Mental Illness Management: Systematic Review. *JMIR MENTAL HEALTH*. 5(4). doi:10.2196/mental.8816
- Lucassen, P., Pruessner, J., Sousa, N., Almeida, O., Van Dam, A., Rajkoqska, G., Swaab, D., and Czeh, B. (2014). Neuropathology of stress. *Acta Neuropathol*. 127 (1): 109-135

- Ma, J., Lee, S., and Grogan-Kaylor, A. (2021). Adverse Childhood Experiences and Spanking Have Similar Associations with Early Behavior Problems. *The Journal of Pediatrics*.
- Mojtabai, R., Olfson, M. (2020). National trends in mental health care for US adolescents. *JAMA Psychiatry*, 77(7), 703-714. doi:10.1001
- Ozer, E. J. (2017). Youth-Led Participatory Action Research: Overview and Potential for Enhancing Adolescent Development. *Child Development Perspectives* 11(3): 173-177. doi: 10.1111/cdep.12228
- Robles, A., Gjelsvik, A., Hirway, P., Vivier, P., High, P. (2019). Adverse Childhood Experiences and Protective Factors with School Engagement. *Pediatrics*, 144(2). doi: 10.1542
- Russell, R. (2020). The impact of stress on the structure of the adolescent brain: Implications for adolescent mental health. *Brain Research*. 1654 (1) 185 – 191
- Schickedanz, A., Halfon, N., Sastry, N., Chung, P. (2018). Parents' adverse childhood experiences and their children's behavioral health problems. *Pediatrics*, 142(2). doi: 10. 1542
- Sebastian, C., Viding, E., Williams, K., & Blakemore, S-J. (2010). Social brain development and the affective consequences of ostracism in adolescence. *Brain and Cognition*. 72, 134-145.